

THE GRAND CHARITY

ESTABLISHED BY THE UNITED GRAND LODGE OF ENGLAND

REGISTERED CHARITY NO 281942

UPDATE ON TSUNAMI RELIEF ACTIVITIES

JULY 2006



WORKING WITH PLAN INTERNATIONAL

Plan is a child-centred community development organisation. It is working to improve the quality of life for children in 66 countries worldwide by helping to bring sustainable long-term social and economic development to their communities.

The Grand Charity is working with Plan to fund projects to support victims of the tsunami in India, Sri Lanka and Indonesia.

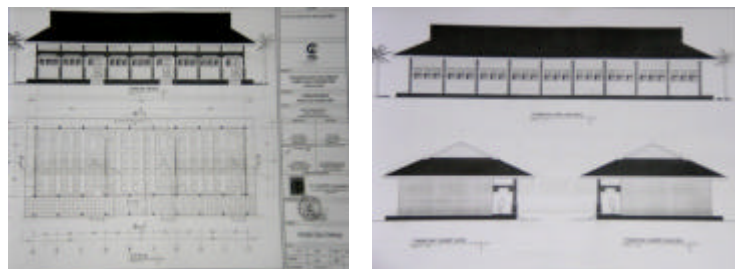
Indonesia – Krueng Raba

The 2004 tsunami had a devastating affect on Indonesia. Over 220,000 people were killed and the country's infrastructure was destroyed. Krueng Raba primary school, located in the Krueng Raba community of Lamkruet village was about 500 metres from the coast and half an hour from Banda Aceh. The tsunami completely destroyed Krueng Raba school and 37 students and 6 teachers were killed in the disaster.

The Grand Charity is donating **£110,000** towards a project to **reconstruct and equip Krueng Raba school**, creating a stable, healthy learning environment for 240 children. The increased capacity and improved facilities of the new school will encourage higher rates of attendance, which should result in improved levels of academic achievement for many years to come. The school is expected to be completed in 2007 and will incorporate:

- 6 classrooms
- A playground
- A library
- Disabled access
- Teacher accommodation

Plan has taken a prudent and long-term approach to its work in Indonesia, with a careful assessment of what is needed and what it is able to deliver. As with all Plan projects, anti-corruption mechanisms have been put in place and the Krueng Raba project will be subject to extensive visits and monitoring reports.



Plans for Krueng Raba school

India - Villapuram

The Grand Charity is supporting a project to help families living in 10 fishing villages in Villapuram, Tamil Nadu, India. Since May 2005 **over £236,500** has been donated from the tsunami Relief Chest to fund a range of activities. This includes over **£50,000** given between February – April 2006, to fund the activities outlined below:

- A medical camp that provided free expert advice and medication to over 600 people. This free access is of particular benefit to the health of women, children and other vulnerable groups.
- The protection and development of the rights of children are important part of the ongoing work of the child care centres. The issue of identity is one element of this and over 130 of the 180 children attending the child care centres have now been issued with birth certificates.
- Where women have an involvement in the family income and savings, the money is often more effectively targeted towards the overall benefit of the family. The self help groups established as part of the Villapuram project are helping many women to take up income generation activities, giving them an opportunity to save and benefit the whole family.

Activities undertaken by the self help groups during the report period include:

- Training in the use of natural and locally available resources in producing products
- Entrepreneurship development training, including various business techniques, selecting a business and how to address the problems experienced as part of the day-to-day functioning of a business.



Visiting the doctor



Learning through play



Creativity at work

Sri Lanka - Hambantota

In Hambantota, Sri Lanka, The Grand Charity is supporting the construction of Ruhunu Vijaybha Primary and Secondary School with a donation of approximately **£200,000**.

Excellent progress has been made on the project, which is part of Plan's work to improve the education system and to enhance opportunities for children in the tsunami affected coastal areas.

The development of the project is reviewed at meetings held every 2 weeks and attended by the site's resident engineer, architectural consultants, contractors, projects managers and Plan.

In summary:

- Masonry work on the primary classrooms is almost complete and concreting and reinforcement work is in progress
- Construction of the secondary school buildings including science laboratories, an industrial work shop and teachers' quarters has commenced
- A meeting has been held with representatives from the Ministry of Education, Tsunami Education Reconstruction Monitor (a body established to monitor post-tsunami school construction projects) and the Southern Provincial Council to develop an operational plan for the school.

For the latest update on the progress of this project visit:

http://www.plan-lanka.lk/html/TsunamiFeature_ruhunuschool.shtml



Plans for the future



Building opportunities



Classroom smiles